

Apriso Global Traceability and Genealogy

Comprehensive Enterprise Track and Trace

Manufacturing companies today face extraordinary pressure to produce and deliver the perfect product, at the right time and at the right quality. At the same time, most must comply with an evolving set of regulations requiring product traceability of all materials and components, whether the finished goods are manufactured at one of many company-owned locations or sourced externally. Increasing dependence on supply chain partners adds further complexity and additional challenges to capturing end-to-end product traceability. Manufacturers today need a way to consolidate data not only from their own disparate manufacturing, quality and warehousing systems, but from external sources throughout the supply and distribution of their products.

Apriso delivers these capabilities with FlexNet Global Traceability and Genealogy, a FlexNet application that consolidates detailed product, genealogy and event data from multiple plants and disparate systems into a single, global repository. By combining this centralized repository with a global manufacturing platform and native Business Process Management (BPM) capabilities, Global Traceability and Genealogy provides a flexible and adaptive application which fits into any IT environment. And, by leveraging intelligence and collaboration technologies from Microsoft, the solution offers better visibility to product or compliance issues while enabling faster, more comprehensive root cause analysis.

FlexNet Global Traceability and Genealogy captures detailed traceability data automatically from any MES system while integrating with your enterprise systems such as ERP, PLM and CRM. It is built from the ground up to handle large data volumes at a level of detail not found in ERP. And, it supports multiple data capture methods including Web services, ETL (Extract, Transform, and Load) and Microsoft Excel.

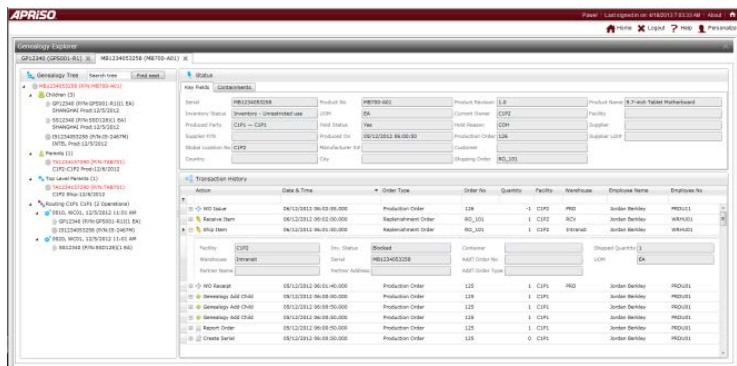
Brand Protection in the Face of Changing Regulations

Global Traceability and Genealogy provides a powerful framework for visualizing and monitoring detailed product genealogy and traceability data to proactively ensure compliance. Native Business Process Management (BPM) enables a flexible and cost-effective response to evolving regulatory and customer requirements. Global Traceability and Genealogy ensures compliance to regulatory and customer demands while helping protect the integrity of your brand.

Benefits

- Provides visibility, collaboration and control while eliminating lost or incomplete genealogy and traceability
- Validates product returns to reduce costs and eliminate return of counterfeit and expired products
- Accelerates responsiveness and eliminates manual processes with modern unified communication and collaboration capabilities
- Lowers risk and cost of compliance to changing regulations with an adaptive platform that supports continuous improvement. Reduces deployment risk and time by leveraging existing manufacturing and enterprise IT infrastructure

“We now have full traceability of finished goods. FlexNet traces products back to the lot or batch, giving us a full genealogy of each product. Before, tracing product history required countless hours; the software definitely saves us time.”
 - Maciek Radecki, Operations IT manager, BAT Poland



Work Collaboratively to Improve Quality Investigations

A coordinated and collaborative response is essential to minimize the impact of both internal and external quality failures. Global Traceability and Genealogy provides native alerting and notification workflows, across the enterprise and value chain, eliminating time consuming phone calls, faxes and email. With embedded Microsoft Lync™ for unified communications, anyone can leverage available experts at any location and start an immediate chat session, phone call or conference to collaborate and share updated information. Optionally, a collaborative team site can be launched using Microsoft SharePoint™ 2013. This virtual workspace provides a collaborative forum for both management and users to monitor progress of an investigation, follow updated information feeds and share ideas. With collaboration, the best solution found locally in one facility is immediately visible to everyone, improving responsiveness and further reducing risk of escapes.

Accelerate Time to Deployment

In many organizations, traceability and genealogy data is locked up in multiple, disparate systems that do not readily exchange information. Consequently, investigating quality or compliance issues typically requires a quality or process engineer to log on to multiple systems in order to cobble together the full genealogy and traceability history. Data may need to be exported to a document or Excel spreadsheet and then manually consolidated in order to give a view of the end-to-end traceability. This process may take days or weeks to complete and can be expensive and error prone. In the meantime, the customer or an auditor is left waiting for a resolution.

FlexNet Global Traceability and Genealogy aggregates data from FlexNet applications as well as ERP or 3rd party MES, Quality, Inventory or Maintenance applications in order to provide a comprehensive and unified view of product genealogy and traceability history. It provides a common interface for capturing this data, simplifying the normally arduous task of data collection. A small, lightweight "Site Connector" is installed on the plant system which receives data for each genealogy and traceability event. FlexNet Global Traceability and Genealogy then uses Extract, Transform and Load (ETL) technology to rapidly move data from the source systems, across all plants, to its single, unified, global repository. The result is comprehensive, end-to-end traceability without "rip & replace" of your existing manufacturing operations and quality systems.

Part of the Total FlexNet Solution

FlexNet Global Traceability and Genealogy is a collaborative and flexible solution built on the FlexNet adaptive platform for global manufacturing. Built with a native Business Process Management (BPM) framework that incorporates a unified data model, FlexNet applications enable continuous improvement and rapid response to market changes. The solution utilizes a Service Oriented Architecture (SOA) to ease integration with enterprise applications, such as ERP and PLM, while interfacing with MES systems, RFID readers, sensors and automation equipment.

About Apriso

Dedicated to helping manufacturers transform their global operations, Apriso enables its clients to achieve and sustain operational excellence while adapting quickly to change. Apriso was acquired by Dassault Systèmes, as part of a strategy to better extend the reach of engineering and design applications down to the shop floor. Apriso and Dassault Systèmes serve 170,000 customers across 140 countries. Learn more at apriso.com, visit our blog at apriso.com/blog, or follow the company on Twitter at [@Apriso](https://twitter.com/Apriso). Learn more about Dassault Systèmes at 3ds.com.

Features

- Provides a centralized, global repository for detailed product genealogy from disparate sources across the enterprise
- Integrates with 3rd party MES, manufacturing IT, ERP and other enterprise systems
- Includes automated alerting and notification workflows
- Offers embedded collaboration with Microsoft Lync™ and Microsoft SharePoint™ 2013
- Provides instant access to current and historical data
- Built on an adaptive, Business Process Management (BPM) platform for agility and flexibility
- Offers optional data warehouse framework for analytics, visibility and reporting
- Supports flexible serialization schemes and utilizes existing RFID and barcode scanning technologies
- Enables EPCglobal and GS1 support
- Offers multilingual and localization support
- Includes role-based security and web-based interface

